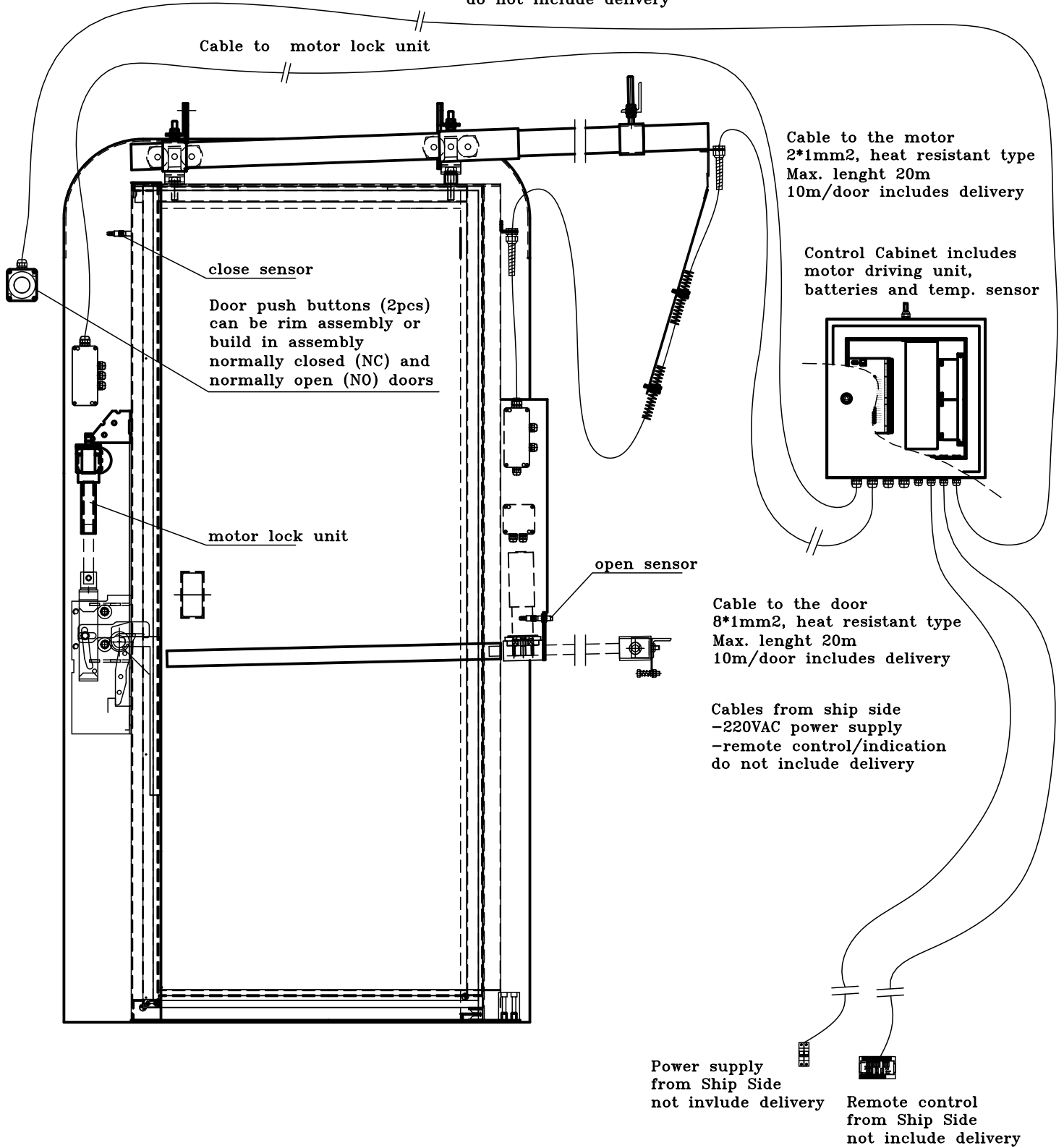


SLIDING DOORS, watertight (SWT) ELECTRIC DRIVING SYSTEM

Optional

Cables (2pcs) to the push buttons
both sides of the bulkhead, min 2*1mm²
do not include delivery



PARMARINE OY LTD

FIN-79100 Leppävirta
Tel.+358 17 570211, Fax+358 17 5542725